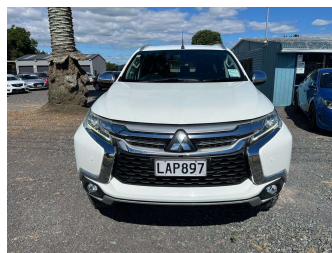



2017 Mitsubishi Pajero Sport VRX 2.4DT 4WD 8AT 7



Purchase Price **\$28,950**
Includes GST, Registration & Licensing

Indicative repayments
\$179.95 per week*
Based on a 36 month term & 20% deposit.
Total repayments (156) = **\$33,862.59**



Gain peace of mind with
Mechanical Breakdown
Insurance. **Ask us how.**



Top features

- » 4WD 4x4 4 Wheel Drive...
- » 6 SRS Air Bags
- » 7 seat 7 seats 7 seate...
- » ABS Braking
- » Alloy Wheels
- » Chain Driven Engine
- » Child seat anchor poin...
- » Climate Control
- » Cruise Control
- » Dual Range 4WD
- » Electric Mirrors
- » Electric Seats
- » Electric Windows
- » Full Leather Seating
- » Heated Seats
- » Keyless Entry
- » Keyless Start
- » NZ From New

Body Style
5 door, RV/SUV

Odometer
174,100 km

Engine
2442 cc, Internal Combustion


Fuel Type
Diesel

Transmission
Automatic, 4WD

Wheels
-

VIN
MMAGUKS10HH004212

Interior
Black

Safety

Based on 2025 UCSR rating for 15-23 models

Reg No.
LAP897

Ext Colour
White

History
NZ New, 4 owners

Seats
7 seats, Leather

CO2 Emissions
★ ★ ☆ ☆ ☆ ☆
244 grams/km


Energy Economy
★ ★ ☆ ☆ ☆ ☆
Annual fuel cost of \$3,640
9.2L per 100km

Cost per year is an estimate based on diesel price of \$2.00 per litre and an average distance of 14000 km. Includes Road User Charges (RUC). Emissions and Energy Economy figures standardised to 3P WLTP.

Stock ID: 5473



Driven Auto Sales | Phone 07 579 9169 | Email sales@drivenauto.co.nz
751 State Highway 29, Tauriko, Tauranga 3171, New Zealand
www.drivenauto.co.nz



★★★★★
4.61 | 1429 reviews

* Driven Auto Sales is not a lender nor a financial adviser. Any amounts displayed should not be seen as an offer of finance or taken as financial advice. The interest rate, fees and loan term used in this calculation may not actually represent those available from lenders. Actual interest rates, fees and loan terms will vary per lender and are typically based on an assessment of your credit risk and responsible lending criteria. Any repayment amounts displayed are indicative only and have been calculated using several other indicative inputs. The interest rate used in this calculation is an arbitrary 12.95%, however exact interest rates vary per lender. The term of the loan used in this calculation is 36 month. Exact terms available vary per lender although options typically include 6, 12, 18, 24, 36, 48 and 60 months. The total amount of repayments has been calculated by multiplying 156 weekly repayments (based on a 36 month term) by the weekly repayment amount of \$179.95 which equals \$33,862.59. This calculator does not consider any of your own personal circumstances and we strongly suggest you seek budgeting advice prior to committing to any loan contract. Responsible lending criteria and lender terms and conditions will likely apply to any finalised loan contract. Proof of security and/or vehicle insurance may also be required before proceeding.