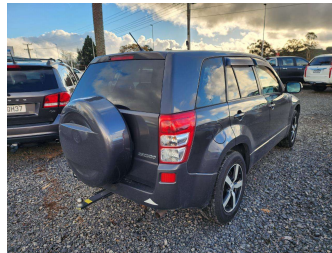


2011 Suzuki Escudo 2.4 4WD Auto 5 Door



Driven Auto Sales

Finance this car from

\$86.71*
per week

DRIVEN AUTO SALES - Driving the BEST DEALS for You!!

✓ Easy Online Application ✓ No Deposit (LAP) ✓ Flexible Terms


Purchase Price **\$13,950**

Includes GST, Registration & Licensing


Indicative repayments

\$86.71 per week*

Based on a 36 month term & 20% deposit.
Total repayments (156) = \$16,317.21



Gain peace of mind with Mechanical Breakdown Insurance. **Ask us how.**



Top features

- » 4WD 4x4 4 Wheel Drive...
- » 6 SRS Air Bags
- » ABS Braking
- » Alloy Wheels
- » Blinker Mirrors
- » Climate Control
- » Electric Mirrors
- » Electric Windows
- » Full Centre Seat Belt
- » HI/LOW 4WD With Neutra...
- » Keyless Entry
- » Keyless Start
- » Monsoons
- » Reverse Camera
- » Tinted Windows
- » Tow Bar
- » Traction Control
- » Vehicle Stability Cont...

Body Style
5 door, RV/SUV

Odometer
50,470 km

Engine
2390 cc

Fuel Type
Petrol

Transmission
Automatic, 4WD

Wheels
-

VIN
7AT0GK4MX22211655

Interior
-

Safety



Based on 2025 VSRR rating

Reg No.
PEJ678

Ext Colour
Grey

History
Ex-Overseas, 1 owner

Seats
5 seats, Cloth

CO2 Emissions
★ ★ ☆ ☆ ☆ ☆
259 grams/km

Energy Economy
★ ☆ ☆ ☆ ☆ ☆

Annual fuel cost of \$4,350
11.1L per 100km

Cost per year is an estimate based on petrol price of \$2.80 per litre and an average distance of 14000 km. Emissions and Energy Economy figures standardised to 3P WLTP.

Stock ID: 5572



Driven Auto Sales | Phone 07 579 9169 | Email sales@drivenauto.co.nz
751 State Highway 29, Tauriko, Tauranga 3171, New Zealand
www.drivenauto.co.nz

4.61 | 1437 reviews

* Driven Auto Sales is not a lender nor a financial adviser. Any amounts displayed should not be seen as an offer of finance or taken as financial advice. The interest rate, fees and loan term used in this calculation may not actually represent those available from lenders. Actual interest rates, fees and loan terms will vary per lender and are typically based on an assessment of your credit risk and responsible lending criteria. Any repayment amounts displayed are indicative only and have been calculated using several other indicative inputs. The interest rate used in this calculation is an arbitrary 12.95%, however exact interest rates vary per lender. The term of the loan used in this calculation is 36 months. Exact terms available vary per lender although options typically include 6, 12, 18, 24, 36, 48 and 60 months. The total amount of repayments has been calculated by multiplying 156 weekly repayments (based on a 36 month term) by the weekly repayment amount of \$86.71 which equals \$16,317.21. This calculator does not consider any of your own personal circumstances and we strongly suggest you seek budgeting advice prior to committing to any loan contract. Responsible lending criteria and lender terms and conditions will likely apply to any finalised loan contract. Proof of security and/or vehicle insurance may also be required before proceeding.