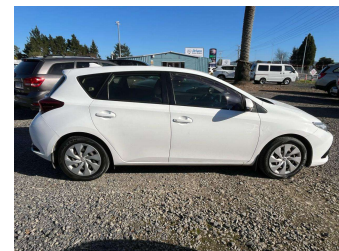
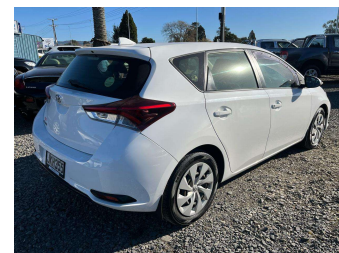
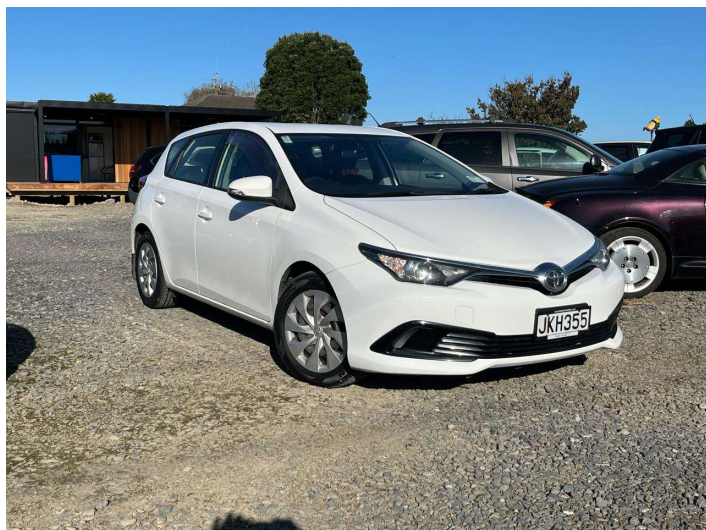



2015 Toyota Corolla GX 1.8 Auto 5Dr Hatch NZ New



Purchase Price **\$11,950**
Includes GST, Registration & Licensing

Indicative repayments
\$74.28 per week*
Based on a 36 month term & 20% deposit.
Total repayments (156) = **\$13,977.82**



Gain peace of mind with
Mechanical Breakdown
Insurance. **Ask us how.**



Top features

- » 8 SRS Airbags
- » ABS Braking
- » Blinker Mirrors
- » Cargo Blind
- » Chain Driven Engine
- » Child seat anchor poin...
- » Climate Control
- » Cruise Control
- » Drivers Monsoon
- » Electric Mirrors
- » Electric Windows
- » Full Centre Seat Belt
- » Great service history
- » NZ From New
- » Remote Central Locking
- » Reverse Camera
- » Split Rear Seats
- » Steering Wheel Stereo...

Body Style
5 door, hatch

Odometer
153,980 km

Engine
1798 cc, Internal Combustion


Fuel Type
Petrol

Transmission
Automatic, Front Wheel

Wheels
-

VIN
JTNKU3JE20J102480

Interior
-

Safety

Based on 2025 UCSR rating for 12-19 models

Reg No.
JKH355

Ext Colour
White

History
NZ New, 2 owners

Seats
5 seats, Cloth

CO2 Emissions
★★★★☆
159 grams/km


Energy Economy
★★☆☆☆
Annual fuel cost of \$2,670
6.8L per 100km

Cost per year is an estimate based on petrol price of \$2.80 per litre and an average distance of 14000 km. Emissions and Energy Economy figures standardised to 3P WLTP.

Stock ID: 5633



Driven Auto Sales | Phone 07 579 9169 | Email sales@drivenauto.co.nz
751 State Highway 29, Tauriko, Tauranga 3171, New Zealand
www.drivenauto.co.nz

 **4.62** | 1449 reviews

* Driven Auto Sales is not a lender nor a financial adviser. Any amounts displayed should not be seen as an offer of finance or taken as financial advice. The interest rate, fees and loan term used in this calculation may not actually represent those available from lenders. Actual interest rates, fees and loan terms will vary per lender and are typically based on an assessment of your credit risk and responsible lending criteria. Any repayment amounts displayed are indicative only and have been calculated using several other indicative inputs. The interest rate used in this calculation is an arbitrary 12.95%, however exact interest rates vary per lender. The term of the loan used in this calculation is 36 month. Exact terms available vary per lender although options typically include 6, 12, 18, 24, 36, 48 and 60 months. The total amount of repayments has been calculated by multiplying 156 weekly repayments (based on a 36 month term) by the weekly repayment amount of \$74.28 which equals \$13,977.82. This calculator does not consider any of your own personal circumstances and we strongly suggest you seek budgeting advice prior to committing to any loan contract. Responsible lending criteria and lender terms and conditions will likely apply to any finalised loan contract. Proof of security and/or vehicle insurance may also be required before proceeding.