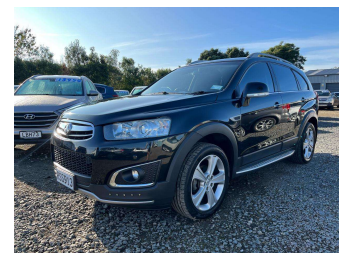
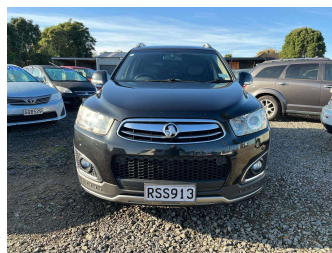



2015 Holden Captiva 7 LTZ 3.0 6Auto 4WD 7 Seat NZ



Purchase Price **\$8,950**
Includes GST, Registration & Licensing

Indicative repayments
\$55.63 per week*
Based on a 36 month term & 20% deposit.
Total repayments (156) = **\$10,468.75**



Gain peace of mind with
Mechanical Breakdown
Insurance. **Ask us how.**



Top features

- » 10 SRS Air Bags
- » 4WD 4x4 4 Wheel Drive...
- » 7 seat 7 seats 7 seate...
- » ABS Braking
- » Alloy Wheels
- » Blinker Mirrors
- » Child seat anchor poin...
- » Climate Control
- » Cruise Control
- » Electric Drivers Seat
- » Electric Mirrors
- » Electric Windows
- » Full Centre Seat Belt
- » Full Leather Seating
- » Heated Seats
- » Keyless Entry
- » Keyless Start
- » NZ From New

Body Style
5 door, RV/SUV

Odometer
216,200 km

Engine
2997 cc, Internal Combustion

Fuel Type
Petrol

Transmission
Automatic, 4WD

Wheels
-

VIN
KL3CD2659FB046222

Interior
Black

Safety
-

Reg No.
RSS913

Ext Colour
Black

History
Ex-Overseas, 3 owners

Seats
7 seats, Leather

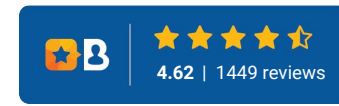
CO2 Emissions
-

Energy Economy
-

Stock ID: 5549



Driven Auto Sales | Phone 07 579 9169 | Email sales@drivenauto.co.nz
751 State Highway 29, Tauriko, Tauranga 3171, New Zealand
www.drivenauto.co.nz



* Driven Auto Sales is not a lender nor a financial adviser. Any amounts displayed should not be seen as an offer of finance or taken as financial advice. The interest rate, fees and loan term used in this calculation may not actually represent those available from lenders. Actual interest rates, fees and loan terms will vary per lender and are typically based on an assessment of your credit risk and responsible lending criteria. Any repayment amounts displayed are indicative only and have been calculated using several other indicative inputs. The interest rate used in this calculation is an arbitrary 12.95%, however exact interest rates vary per lender. The term of the loan used in this calculation is 36 month. Exact terms available vary per lender although options typically include 6, 12, 18, 24, 36, 48 and 60 months. The total amount of repayments has been calculated by multiplying 156 weekly repayments (based on a 36 month term) by the weekly repayment amount of \$55.63 which equals \$10,468.75. This calculator does not consider any of your own personal circumstances and we strongly suggest you seek budgeting advice prior to committing to any loan contract. Responsible lending criteria and lender terms and conditions will likely apply to any finalised loan contract. Proof of security and/or vehicle insurance may also be required before proceeding.