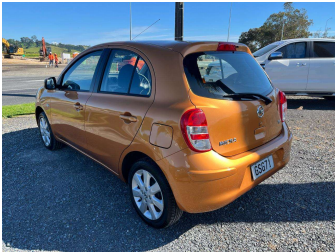


2013 Nissan Micra TI 1.5 AUTO HATCH NZ NEW



Purchase Price

Includes GST, Registration & Licensing

\$7,490

Indicative repayments

\$46.56 per week*

Based on a 36 month term & 20% deposit.
Total repayments (156) = **\$8,761**



Gain peace of mind with
Mechanical Breakdown
Insurance. **Ask us how.**



Top features

- » 6 SRS Air Bags
- » ABS Braking
- » Alloy Wheels
- » Aux In
- » Cargo Blind
- » Child seat anchor poin...
- » Climate Control
- » Electric Mirrors
- » Electric Windows
- » Full Centre Seat Belt
- » Keyless Entry
- » Keyless Start
- » NZ From New
- » service history
- » Split Rear Seats
- » Steering Wheel Stereo...
- » Traction Control
- » Vehicle Stability Cont...

Body Style

5 door, hatch

Odometer

98,200 km

Engine

1499 cc, Internal Combustion

Fuel Type

Petrol

Transmission

Automatic, Front Wheel

Wheels

-

VIN

MNTFAUK13A0006753

Interior

-

Safety

-

Reg No.

GSG71

Ext Colour

Orange

History

NZ New, 2 owners

Seats

5 seats, Cloth

CO2 Emissions

-

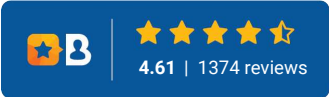
Energy Economy

-

Stock ID: 5343



Driven Auto Sales | Phone 07 579 9169 | Email sales@drivenauto.co.nz
751 State Highway 29, Tauriko, Tauranga 3171, New Zealand
www.drivenauto.co.nz



* Driven Auto Sales is not a lender nor a financial adviser. Any amounts displayed should not be seen as an offer of finance or taken as financial advice. The interest rate, fees and loan term used in this calculation may not actually represent those available from lenders. Actual interest rates, fees and loan terms will vary per lender and are typically based on an assessment of your credit risk and responsible lending criteria. Any repayment amounts displayed are indicative only and have been calculated using several other indicative inputs. The interest rate used in this calculation is an arbitrary 12.95%, however exact interest rates vary per lender. The term of the loan used in this calculation is 36 month. Exact terms available vary per lender although options typically include 6, 12, 18, 24, 36, 48 and 60 months. The total amount of repayments has been calculated by multiplying 156 weekly repayments (based on a 36 month term) by the weekly repayment amount of \$46.56 which equals \$8,761.00. This calculator does not consider any of your own personal circumstances and we strongly suggest you seek budgeting advice prior to committing to any loan contract. Responsible lending criteria and lender terms and conditions will likely apply to any finalised loan contract. Proof of security and/or vehicle insurance may also be required before proceeding.