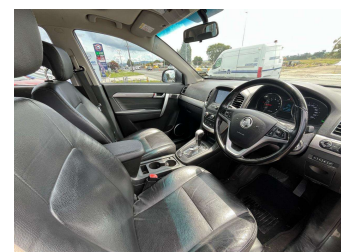
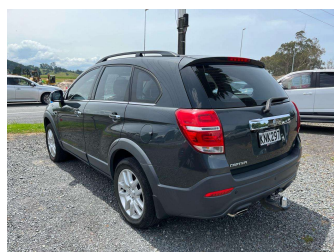
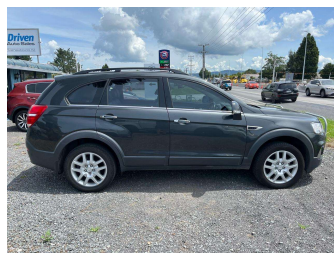


2017 Holden Captiva LS EQUIPE 2.4 6AT 7 Seat NZ



Purchase Price


\$13,490

Includes GST, Registration & Licensing


Indicative repayments

\$83.85 per week*

Based on a 36 month term & 20% deposit.
Total repayments (156) = **\$15,779.15**



Gain peace of mind with
Mechanical Breakdown
Insurance. **Ask us how.**



Top features

- » 10 SRS Air Bags
- » 7 seat 7 seats 7 seate...
- » ABS Braking
- » Alloy Wheels
- » Blinker Mirrors
- » body Molds
- » Central Locking
- » Climate Control
- » Cruise Control
- » Electric Drivers Seat
- » Electric Mirrors
- » Electric Windows
- » Full Leather Seating
- » Higher seating positio...
- » Keyless Entry
- » Keyless Start
- » NZ From New
- » Power Steering

Body Style
5 door, RV/SUV

Odometer
130,881 km

Engine
2384 cc, Internal Combustion

Fuel Type
Petrol

Transmission
Automatic, Front Wheel

Wheels
-

VIN
KL3CA26U9HB739849

Interior
-

Safety



Based on 2025 UCSR rating
for 06-18 models

Reg No.
KNK297

Ext Colour
Grey

History
NZ New, 3 owners

Seats
7 seats, Leather

CO2 Emissions
★ ★ ☆ ☆ ☆ ☆
252 grams/km

Energy Economy
★ ☆ ☆ ☆ ☆ ☆


Annual fuel cost of \$4,190
10.7L per 100km

Cost per year is an estimate based
on petrol price of \$2.80 per litre and
an average distance of 14000 km.
Emissions and Energy Economy
figures standardised to 3P WLTP.

Stock ID: 5430



Driven Auto Sales | Phone 07 579 9169 | Email sales@drivenauto.co.nz
751 State Highway 29, Tauriko, Tauranga 3171, New Zealand
www.drivenauto.co.nz



4.61 | 1398 reviews

* Driven Auto Sales is not a lender nor a financial adviser. Any amounts displayed should not be seen as an offer of finance or taken as financial advice. The interest rate, fees and loan term used in this calculation may not actually represent those available from lenders. Actual interest rates, fees and loan terms will vary per lender and are typically based on an assessment of your credit risk and responsible lending criteria. Any repayment amounts displayed are indicative only and have been calculated using several other indicative inputs. The interest rate used in this calculation is an arbitrary 12.95%, however exact interest rates vary per lender. The term of the loan used in this calculation is 36 month. Exact terms available vary per lender although options typically include 6, 12, 18, 24, 36, 48 and 60 months. The total amount of repayments has been calculated by multiplying 156 weekly repayments (based on a 36 month term) by the weekly repayment amount of \$83.85 which equals \$15,779.15. This calculator does not consider any of your own personal circumstances and we strongly suggest you seek budgeting advice prior to committing to any loan contract. Responsible lending criteria and lender terms and conditions will likely apply to any finalised loan contract. Proof of security and/or vehicle insurance may also be required before proceeding.

Vehicle data updated 12 January 2026 10:02