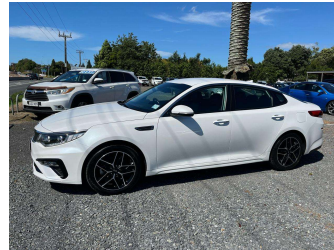


2019 Kia Optima EX 2.4P 6Auto Sedan NZ New



Purchase Price

Includes GST, Registration & Licensing

\$14,950

Indicative repayments

\$92.93 per week*

Based on a 36 month term & 20% deposit.
Total repayments (156) = **\$17,486.9**



Gain peace of mind with
Mechanical Breakdown
Insurance. **Ask us how.**



Top features

- » 6 SRS Air Bags
- » ABS Braking
- » Alloy Wheels
- » Blind Spot Monitor
- » Blinker Mirrors
- » Child seat anchor poin...
- » Climate Control
- » Cruise Control
- » Electric Drivers Seat
- » Electric Mirrors
- » Electric Windows
- » Full Centre Seat Belt
- » Full Leather Seating
- » Great service history
- » Keyless Entry
- » Keyless Start
- » Navigation
- » Paddle Shift Tiptronic...

Body Style

4 door, Sedan

Odometer

108,800 km

Engine

2358 cc, Internal Combustion

Fuel Type

Petrol

Transmission

Automatic, Front Wheel

Wheels

-

VIN

KNAGU413MK5284056

Interior

Black

Safety

-

Reg No.

MCL919

Ext Colour

White

History

NZ New, 2 owners

Seats

5 seats, Leather

CO2 Emissions

-

Energy Economy

-

Stock ID: 5353



Driven Auto Sales | Phone 07 579 9169 | Email sales@drivenauto.co.nz
751 State Highway 29, Tauriko, Tauranga 3171, New Zealand
www.drivenauto.co.nz



★★★★★
4.61 | 1408 reviews

* Driven Auto Sales is not a lender nor a financial adviser. Any amounts displayed should not be seen as an offer of finance or taken as financial advice. The interest rate, fees and loan term used in this calculation may not actually represent those available from lenders. Actual interest rates, fees and loan terms will vary per lender and are typically based on an assessment of your credit risk and responsible lending criteria. Any repayment amounts displayed are indicative only and have been calculated using several other indicative inputs. The interest rate used in this calculation is an arbitrary 12.95%, however exact interest rates vary per lender. The term of the loan used in this calculation is 36 month. Exact terms available vary per lender although options typically include 6, 12, 18, 24, 36, 48 and 60 months. The total amount of repayments has been calculated by multiplying 156 weekly repayments (based on a 36 month term) by the weekly repayment amount of \$92.93 which equals \$17,486.90. This calculator does not consider any of your own personal circumstances and we strongly suggest you seek budgeting advice prior to committing to any loan contract. Responsible lending criteria and lender terms and conditions will likely apply to any finalised loan contract. Proof of security and/or vehicle insurance may also be required before proceeding.

Vehicle data updated 09 February 2026 16:31