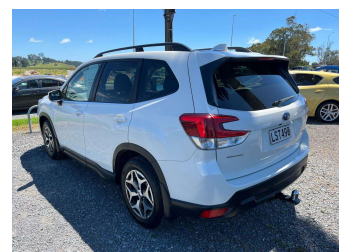


# 2018 Subaru Forester 2.5 SPORT 4WD AUTO S/W NZ



## Purchase Price

Includes GST, Registration & Licensing

# \$17,950

## Indicative repayments

# \$111.58 per week\*

Based on a 36 month term & 20% deposit.  
Total repayments (156) = **\$20,995.98**



Gain peace of mind with  
Mechanical Breakdown  
Insurance. **Ask us how.**



## Top features

- » 4WD 4x4 4 Wheel Drive...
- » 6 SRS Air Bags
- » ABS Braking
- » Alloy Wheels
- » Blinker Mirrors
- » Chain Driven Engine
- » Child seat anchor poin...
- » Climate Control
- » Cruise Control
- » Electric Mirrors
- » Electric Windows
- » Full Centre Seat Belt
- » Great service history
- » Keyless Entry
- » Keyless Start
- » NZ From New
- » Paddle Shift Tiptronic...
- » Reverse Camera

## Body Style

**5 door, RV/SUV**

## Odometer

**157,600 km**

## Engine

**2498 cc, Internal Combustion**

## Fuel Type

**Petrol**

## Transmission

**Automatic, 4WD**

## Wheels

-

## VIN

**JF2SK9KL5KG006400**

## Interior

**Black**

## Safety



Based on 2025 UCSR rating  
for 12-18 models

## Reg No.

**LST490**

## Ext Colour

**White**

## History

**NZ New, 2 owners**

## Seats

**5 seats, Cloth**

## CO2 Emissions

★★★★★☆☆

**187 grams/km**

## Energy Economy

★★☆☆☆☆

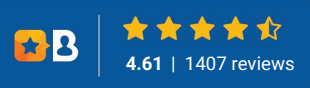
**Annual fuel cost of \$3,210  
8.2L per 100km**

Cost per year is an estimate based  
on petrol price of \$2.80 per litre and  
an average distance of 14000 km.  
Emissions and Energy Economy  
figures standardised to 3P WLTP.

**Stock ID: 5423**



Driven Auto Sales | Phone 07 579 9169 | Email sales@drivenauto.co.nz  
751 State Highway 29, Tauriko, Tauranga 3171, New Zealand  
www.drivenauto.co.nz



\* Driven Auto Sales is not a lender nor a financial adviser. Any amounts displayed should not be seen as an offer of finance or taken as financial advice. The interest rate, fees and loan term used in this calculation may not actually represent those available from lenders. Actual interest rates, fees and loan terms will vary per lender and are typically based on an assessment of your credit risk and responsible lending criteria. Any repayment amounts displayed are indicative only and have been calculated using several other indicative inputs. The interest rate used in this calculation is an arbitrary 12.95%, however exact interest rates vary per lender. The term of the loan used in this calculation is 36 month. Exact terms available vary per lender although options typically include 6, 12, 18, 24, 36, 48 and 60 months. The total amount of repayments has been calculated by multiplying 156 weekly repayments (based on a 36 month term) by the weekly repayment amount of \$111.58 which equals \$20,995.98. This calculator does not consider any of your own personal circumstances and we strongly suggest you seek budgeting advice prior to committing to any loan contract. Responsible lending criteria and lender terms and conditions will likely apply to any finalised loan contract. Proof of security and/or vehicle insurance may also be required before proceeding.

Vehicle data updated 07 February 2026 12:37