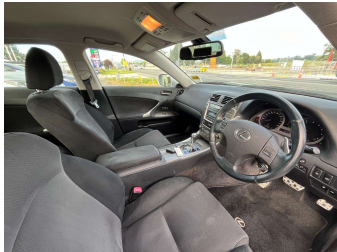


# 2008 Lexus IS250 2.5 Sport 6Auto Sedan NZ New



Purchase Price

\$8,950

Includes GST, Registration & Licensing

Indicative repayments

\$55.63 per week\*

Based on a 36 month term & 20% deposit.  
Total repayments (156) = \$10,468.75

Gain peace of mind with  
Mechanical Breakdown  
Insurance. **Ask us how.**

Top features

» 8 SRS Airbags

» ABS Braking

» Alloy Wheels

» Child seat anchor poin...

» Climate Control

» Cruise Control

» Electric Mirrors

» Electric Seats

» Electric Windows

» Full Centre Seat Belt

» Keyless Entry

» Keyless Start

» NZ From New

» Paddle Shift Tiptronic...

» Steering Wheel Stereo...

» Tinted Windows

» Traction Control

» Vehicle Stability Cont...

Body Style

4 door, Sedan

Odometer

190,400 km

Engine

2500 cc, Internal Combustion

Fuel Type

Petrol

Transmission

Automatic, Rear Wheel

Wheels

-

VIN

JTHBK262402072944

Interior

-

Safety

Based on 2025 UCSR rating  
for 05-13 models

Reg No.

EJZ303

Ext Colour

Silver

History

NZ New, 2 owners

Seats

5 seats, Cloth

CO2 Emissions

★ ★ ☆ ☆ ☆ ☆  
243 grams/km

Energy Economy

★ ☆ ☆ ☆ ☆ ☆  
Annual fuel cost of \$3,960  
10.1L per 100km

Cost per year is an estimate based  
on petrol price of \$2.80 per litre and  
an average distance of 14000 km.  
Emissions and Energy Economy  
figures standardised to 3P WLTP.

Stock ID: 5405

\* Driven Auto Sales is not a lender nor a financial adviser. Any amounts displayed should not be seen as an offer of finance or taken as financial advice. The interest rate, fees and loan term used in this calculation may not actually represent those available from lenders. Actual interest rates, fees and loan terms will vary per lender and are typically based on an assessment of your credit risk and responsible lending criteria. Any repayment amounts displayed are indicative only and have been calculated using several other indicative inputs. The interest rate used in this calculation is an arbitrary 12.95%, however exact interest rates vary per lender. The term of the loan used in this calculation is 36 month. Exact terms available vary per lender although options typically include 6, 12, 18, 24, 36, 48 and 60 months. The total amount of repayments has been calculated by multiplying 156 weekly repayments (based on a 36 month term) by the weekly repayment amount of \$55.63 which equals \$10,468.75. This calculator does not consider any of your own personal circumstances and we strongly suggest you seek budgeting advice prior to committing to any loan contract. Responsible lending criteria and lender terms and conditions will likely apply to any finalised loan contract. Proof of security and/or vehicle insurance may also be required before proceeding.